



Janitorial Cleaning Equipment & Cleaning Supplies Outlet
Green Cleaning Products



1.800.870.2006

Dobmeier Janitorial Supplies



How Clean?

Dobmeier Professional Clean!

DOBMEIER PROFESSIONAL STAIN REMOVAL GUIDE

SINCE 1950 - DOBMEIER IS HERE FOR YOU



How Clean?



Dobmeier Professional Clean!



STAIN REMOVAL – THE DOBMEIER PROFESSIONAL STAIN REMOVAL GUIDE

Laundry Stain Removal, Carpets & Rugs Stain Removal, Drapes & Upholstery Stain Removal, Floor, Walls & Hard Surfaces Stain Removal... Find Out The Best Way To Remove Virtually Any Stain From Virtually Anything!

DOBMEIER PROFESSIONAL FLOOR STAIN REMOVAL GUIDE – SCOPE

Are You a ‘Residential’ Stain Remover, a ‘Laundry Professional’, or a ‘Janitorial Professional’?

Homeowners require a simple inexpensive system for safely and reliably removing all sorts of tough stains from their clothing and all their household surfaces.

Laundry Professionals need powerful stain removers that can be used to safely and reliably remove tough stains from a wide range of laundry items.

Janitorial Professionals have to efficiently remove tough stains from a variety of building and furniture surfaces on a daily basis. They are usually equipped with a stable of commercial cleaning equipment, and they are trained to use an array of specialty stain removal chemicals, to quickly and efficiently solve their problems.



The Laundry Stain Spotter Kit

If You are a ‘Homeowner’ or a ‘Laundry Professional’ the simple *universal solution* for all your stain removal needs is the **Laundry Stain Removal Spotter Kit** – See **SECTION 1**

If You are a **Janitorial Professional**, the **Laundry Stain Removal Spotter Kit** is an ideal solution for removing tough stains from most surfaces, but you may require more powerful solutions for efficiently dealing with some stains in carpets & rugs. We recommend 2 powerful **Janitorial Carpet Spotter Systems** specifically designed for removing stains from carpets and rugs and we can also help you find the right equipment for your specific cleaning operation. – See **SECTION 2**

GENERAL STAIN REMOVAL PROCEDURE

STEP 1 - Identify Your Substrate Material That Is Stained:

- Removal Of Stains From Washable Clothing & Other Laundry Items...
- Removal Of Stains From Clothing & Fabrics That Normally Require Dry or Special Cleaning, Even Leather & Suede...
- Removal Of Stains From Carpets, Rugs, Drapes, & Upholstery...
- Removal Of Stains From Kitchen & Bathroom Surfaces, Including Counter Tops, Glazed Tiles, Sinks & Toilets, Baths & Showers, Metal Faucets... Glass Surfaces...
- Removal Of Stains From Hard Porous Surfaces, Like Porous Tile Flooring, Grout, Bricks, Concrete...
- Removal Of Stains From Painted Walls & Surfaces...

STEP 2 - Identify The Type of Stain That You Have, And Use The Best Spotter System To Remove It:

See **SECTION 1** of this guide. For Janitorial Stain Removal from Carpets & Rugs see **SECTION 2**.

If we can identify the stain, we can use an appropriate stain chart to find the best procedure to remove it.

Examples of different stain types include:

- Fruit Juices
- Ketchup, Mustard
- Oils or Greases
- Red Wine
- Urine...

How Clean Is Your Facility? - Is It Dobmeier Professional Clean?

For Selection Advice Or Guidance On Any Professional Floor Cleaning Equipment Or Supplies

Call Your Dobmeier Janitorial Floor Cleaning Expert At 1.800.870.2006 or e-mail

We Ship Discount Brand-Name Cleaning Equipment & Supplies Anywhere In North America!



THE DOBMEIER STAIN REMOVAL GUIDE

Our clothing, furniture, carpets and other surfaces commonly experience ongoing assault from a wide range of soiling and staining agents, including oils & greases, juices & food colorings, pet stains... Yet most households and even many janitorial or laundry professionals find it hard to cope with and efficiently remove the resulting stains. **Dobmeier Janitorial Supplies** is proud to provide this **Stain Removal Guide** to help you permanently remove virtually any stain from laundry, carpets, drapes, upholstery...

How Green Clean?



Dobmeier
Professional
Green Clean!

DOBMEIER PROFESSIONAL GREEN CLEANING PRODUCTS

For any cleaning product to be recognized as a **Dobmeier Professional Green Cleaning Product**, it must have received prior certification as a *Green Cleaning Product* from a third party agency like the **Carpet & Rug Institute (CRI)**, the **EcoLogo Program**, the **Green Seal**, or it must meet the **Dobmeier Green Cleaning Criteria** by demonstrating the following principles:



- effectiveness in use
- environmental responsibility
- environmental sustainability

Whether You need to remove stains in a residential setting or in a large commercial, industrial or institutional setting - **The Dobmeier Stain Removal Guide** has been compiled to help You easily and inexpensively achieve the best possible results.

[Download The Current Edition Of The FREE Dobmeier Stain Removal Guide](#)

SINCE 1950 - DOBMEIER IS HERE FOR YOU



We hope that you enjoy reading your **Dobmeier Stain Removal Guide**. If you have any feedback or ideas that you would like to provide to us, on anything in this guide, we would love to hear from You!

Our family business started in Buffalo, NY, in 1950. Today we specialize in providing discount high quality cleaning equipment, parts, & supplies all across North America, and We Are Here To Help You! If You ever need any help or advice when selecting Your cleaning equipment & supplies, or any other janitorial equipment & supplies, feel free to contact our expert staff:

Call 1.800.870.2006 or e-mail customerservice@dobmeierjanitorialsupplies.com

Sincerely, *Robert & Linda Dobmeier*

Dobmeier Janitorial Equipment & Supplies Outlet

Need Help? - Speak With A Dobmeier Stain Removal Expert At 1.800.870.2006 Or e-mail



STAIN REMOVAL GUIDE SECTION 1 – LAUNDRY STAIN REMOVAL

Introducing The Laundry Stain Removal Spotter Kit – Originally Designed For Use By Laundry Professionals This Easy To Use Universal Stain Removal System Is Also Ideal For Residential Use. It Enables You To Safely & Easily Remove Stains Of Virtually Any Type From Laundry, Drapes & Upholstery, Carpets & Rugs, Hard Surfaces...

The Laundry Stain Removal Spotter Kit – Not Just For Laundry!



Click on Image To See Price (\$SAVE\$ - Login To Get Your Discount Price!)

The [Laundry Stain Removal Spotter Kit](#) contains 3 easy to use stain removal spotters that are designed for removing virtually any laundry stain that you may encounter:

Laundry Stain Removal Spotter A – Stain Release General Stain Spotter & Odor Removal Formula – see Page 6

Laundry Stain Removal Spotter B – Grime Away D-Limonene-based Grease & Oil Stain Removal Formula – see Page 7

Laundry Stain Removal Spotter C – Rust Off Rust Stain Removal Formula – see Page 8

Universal Stain Removal - These powerful stain removal spotters may be used alone or in sequence to remove virtually any stain from your laundry, and **they can also be used to safely remove tough stains from virtually any fabric or hard surface.**

Laundry Stain Removal Spotter Kit Uses

If You've been looking for a single simple and inexpensive stain removal system that you can safely use for:

- Removal Of Stains From Washable Clothing & Other Laundry...
- Removal Of Stains From Clothing & Fabrics That Require Dry Cleaning, Even Leather & Suede...
- Removal Of Stains From Carpets, Rugs, Drapes, & Upholstery...
- Removal Of Stains From Kitchen & Bathroom Surfaces Such As Counter Tops, Glazed Ceramics, Metal, Glass...
- Removal Of Stains From Hard Porous Surfaces Like, Porous Tile Flooring, Grout, Bricks, Concrete...
- Removal Of Stains From Painted Walls & Surfaces...

Then the [Laundry Stain Removal Spotter Kit](#) is the ideal product for you to keep in your laundry closet.

Questions? - Speak With A Dobmeier Stain Removal Expert At 1.800.870. 2006 Or e-mail



STAIN REMOVAL GUIDE – LAUNDRY STAIN REMOVAL SPOTTER SELECTION CHART



Type Of Stain Or Material To Be Removed	A	B	C
Adhesive		B	
Asphalt		B	
Blood Stain	A		
Chocolate Stain	A		
Coffee Stain	A		
Cola Stain	A		
Cooking Oil Stain	A		
Cosmetics		B	
Crayon	A	B	
Decals		B	
Fecal Stains	A		
Food Coloring & Food Spillage Stains	A		
Fruit Juice Stains	A		
Grape Juice Stain	A		
Grass Stain	A		
Grease	A	B	
Gum		B	
Ink Stains		B	
Ketchup Stain	A		
Motor Oil	A	B	
Oil Spills		B	
Paint		B	
Pet Stains / Urine	A		
Red Wine Stain	A		
Rust Stains			C
Shoe Polish		B	
Stickers		B	
Tar		B	
Tracked-In Dirt Stains	A		
Tacky Residues		B	
Tree Sap		B	
Unknown Stains	A	B	C
Vomit Stains	A		
Wax		B	
Wine	A		

Questions? - Speak With A Dobmeier Stain Removal Expert At 1.800.870. 2006 Or e-mail



STAIN REMOVAL GUIDE – LAUNDRY STAIN REMOVAL SPOTTER A

General Stain Removal Guidelines For Laundry

- As Soon As You See A Stain Take Steps To Remove It As Quickly As Possible
- If Possible Identify The Stain Type & The Optimum Stain Removal Procedure, Otherwise Follow Directions For 'Unknown Stain'
- Check Any Stain Removal Spotter Chemicals For Suitability By First Using a Small Amount In An Inconspicuous Area
- Use The Optimum Stain Removal Spotter Chemical(s) & Technique(s) To Remove The Stain Completely
- Then, Thoroughly Flush The Affected Area With Cool Water To Remove All Residues
- Finally, Wash, Rinse & Dry The Entire Article To Minimize The Possibility Of Local De-Coloring Or Re-Emergence Of The Stain



Laundry Stain Removal Spotter A – Stain Release

LAUNDRY STAIN REMOVAL SPOTTER A – 'STAIN RELEASE' is a general stain remover for use on laundry fabrics and clothing, as well as carpets & rugs, upholstery, tile floors, concrete...

- Advanced stain removal formula eliminates tough stains like coffee, wine, juices, food coloring...
- Stain Release stain repulsion system is residue free to help prevent re-soiling
- Natural enzymes permanently eliminate odors, not just mask them

STAIN RELEASE is excellent for permanently removing:
Blood Stains, Chocolate Stains, Coffee Stains, Cola Stains, Cooking Oil Stains, Crayon, Dirt Stains, Fecal Stains, Food Coloring Stains, Grass Stains, Grease, Juice Stains (including Artificial & Natural Juices like Grape Juice), Ketchup Stains, Motor Oil, Pet Stains, Red Wine Stains, Vomit Stains...

USING SPOTTER A - STAIN RELEASE:

1. Spray *Stain Removal Spotter A* onto stained area to achieve thorough coverage
2. Allow 60 seconds for penetration
3. Gently agitate with a 4 in 1 spotting tool or brush
4. Blot or gently rub the affected area with a clean towel
5. Flush, Wash, & Rinse For Residue-Free, Permanent Stain Removal!



[More Information Online](#)

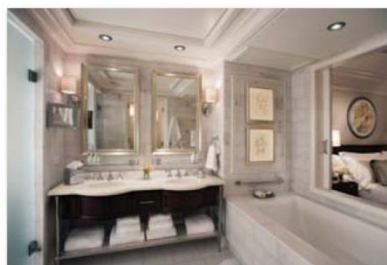
Questions? - Speak With A Dobmeier Stain Removal Expert At 1.800.870. 2006 Or e-mail



STAIN REMOVAL GUIDE – LAUNDRY STAIN REMOVAL SPOTTER B

General Stain Removal Guidelines For Carpets & Rugs, Drapes, Upholstery, & Other Fabrics

- As Soon As You See A Stain Take Steps To Remove It As Quickly As Possible
- If Possible Identify The Stain Type & The Optimum Stain Removal Procedure
- Check Any Stain Removal Spotter Chemicals For Suitability By First Using a Small Amount In An Inconspicuous Area
- Use The Optimum Stain Removal Spotter Chemical(s) & Technique(s) To Remove The Stain Completely
- Thoroughly Flush The Affected Area With An Appropriate Cleaning Rinse & Extract To Remove All Residues
- Finally, Clean The Entire Carpet / Article To Minimize The Possibility Of Local De-Coloring Or Re-Emergence Of The Stain



Universal Stain Removal Kit

The **Laundry Stain Removal Spotter Kit** (Spotter A, Spotter B, & Spotter C) may be used to permanently remove virtually any stain from your laundry, carpets & rugs, drapes & upholstery, leather & suede, counter tops, walls, floors, tiles & bathroom fixtures...

Just use the chart on page 2 to identify the appropriate Spotter for the stain to be treated and follow the directions for that Spotter:

- Stain Removal *Spotter A* page 6
- Stain Removal *Spotter B* page 7
- Stain Removal *Spotter C* page 8

Laundry Stain Removal Spotter B – Grime Away



LAUNDRY STAIN REMOVAL SPOTTER B – ‘GRIME AWAY’ is a powerful formulation that combines **natural ingredients** like pine oil and citrus oils to make up a powerful solvent-based stain dissolver. It safely and gently removes all kinds of sticky, gooey, or tacky residues yet is non-flammable, non-toxic, and is biodegradable with a pleasant citrus scent. Safe for use on laundry fabrics and clothing, as well as carpets & rugs, drapery fabrics & upholstery, floors & walls, metal & glass...

GRIME AWAY is excellent for permanently removing:

Adhesives & Adhesive Residues, Asphalt, Cosmetics, Crayon, Decals, Greases, Gum, Ink Stains, Oils & Oil Stains, Shoe Polish, Stickers, Tar, Tree Sap, Wax...

USING SPOTTER B - GRIME AWAY:

1. Spray *Stain Removal Spotter B* onto stained area to achieve thorough coverage
2. Allow 60 seconds for penetration
3. Gently agitate with a 4 in 1 spotting tool or brush
4. Blot or gently rub the affected area with a clean towel
5. Flush, Wash, & Rinse For Residue-Free, Permanent Stain Removal!

[More Information Online](#)

Questions? - Ask A Dobmeier Stain Removal Expert At 1.800.870. 2006 Or e-mail



STAIN REMOVAL GUIDE – LAUNDRY STAIN REMOVAL SPOTTER C

General Stain Removal Guidelines For Hard Surfaces & Hard Floors

- As Soon As You See A Stain Take Steps To Remove It As Quickly As Possible
- If Possible Identify The Stain Type & The Optimum Stain Removal Procedure (You May Need To Strip Any Floor Finish)
- Check Any Stain Removal Spotter Chemicals For Suitability By First Using a Small Amount In An Inconspicuous Area
- Use The Optimum Stain Removal Spotter Chemical(s) & Technique(s) To Remove The Stain Completely
- Then, Thoroughly Flush & Rinse The Affected Area, With Cool Water To Remove All Residues
- Finally, Thoroughly Clean The Entire Surface To Minimize The Possibility Of Local De-Coloring Or Re-Emergence Of The Stain

Laundry Stain Removal Spotter C – Rust Off

LAUNDRY STAIN REMOVAL SPOTTER C – RUST OFF is a powerful advanced rust stain remover that is a much safer alternative compared to traditional rust removers that contain Hydrofluoric Acid, Oxalic Acid, or Phosphoric Acid. **RUST OFF** quickly reacts with iron & rust breaking it free from the underlying surface for easy removal by wiping with a sponge or rinsing away with cool clean water. It has a light mint fragrance and costs just pennies per application.



USING SPOTTER C - RUST OFF:

For Laundry - apply directly to the rust stain. Work into fabric fibers with a spatula and allow 60 seconds dwell time before flushing & machine washing. If the rust stain persists, repeat the procedure before rinsing & drying.

For Carpet & Upholstery - apply directly to the rust stain. Work into carpet or fabric fibers with a spatula and allow 60 seconds dwell time. Blot with a clean, folded, white terry cloth towel applying strong palm pressure shifting the towel to clean areas as needed. Rinse with cool clean water, extract all residues, and air dry.

For Tile - remove any wax finish with floor stripper, thoroughly rinse and dry the stained area. Apply **Spotter C** to the rust stain and allow up to 60 seconds dwell time. Using a scrubber sponge, agitate the area until the stain is removed. Repeat the treatment if necessary and then thoroughly rinse and blot the area dry.

For Concrete/Natural Stone - degrease and rinse the area then blot it dry. Apply **Spotter C** to the rust stain, but **allow no more than 30 seconds dwell time**. Blot/rub the rust stain with non-abrasive material such as a clean terry cloth, until the stain is removed. Rinse the area and blot it dry

NOTE: Extended exposure may cause whitening/etching of concrete, grout & mortar, or natural stone.

[More Information Online](#)

Laundry Stain Removal Spotter Selection Chart

Consult the [Professional Laundry Stain Removal Selection Chart](#) online.

**Questions? - Speak With A Dobmeier Stain Removal Expert
Call 1.800.870. 2006 Or e-mail**



STAIN REMOVAL GUIDE SECTION 2 - STAIN REMOVAL FROM CARPETS & RUGS

Introducing 2 Heavy-Duty Stain Removal Spotter Systems Specifically Designed For Use By Janitorial Professionals Who Are Required To Remove Stains From Carpets & Rugs On A Regularly Reoccurring Basis. For Best Results, Use Of Specialized Janitorial Cleaning Equipment Such As Carpet Spotters & Carpet Extractors Is Also Recommended.

Carpet & Rug Stain Removal In Commercial & Residential Settings

The exercise of removal of stains from carpets and rugs in commercial, institutional, and industrial settings is typically more frequent, and often far more challenging, than stain removal in the residential setting. For this reason the typical janitorial store room usually contains specialized equipment and chemicals dedicated to the removal of stains and soiling from carpets and rugs.

RESIDENTIAL STAIN REMOVAL FROM CARPETS & RUGS

First consider the exercise of removing stains from carpets & rugs in most residential settings: The **occurrence of staining** is typically identified immediately or soon after it occurs, and the **specific type of stain** is usually easily identified, for example spillage of juice, coffee, red wine... or tracking of tar or grease...

In this situation, most stains can be effectively and permanently removed if immediate action is taken to treat them correctly. In most cases this simply requires that the homeowner have access to the **Laundry Stain Removal Spotter Kit** referenced in SECTION 1 of this guide, and that they follow the simple directions for use of this inexpensive and easily maintained kit in removal of stains from carpets & rugs. Stains that have been allowed to set and dry in are usually more difficult to remove, and may require professional treatment as outlined below.



Laundry Stain Removal Spotter Kit Also Removes Stains From Carpets & Rugs

PROFESSIONAL STAIN REMOVAL FROM CARPETS & RUGS



SSS (Triple S) Bobcat 10 Extractor For Cleaning Carpets & Rugs

The janitorial professional usually faces a much more difficult job than the homeowner when removing stains from carpets & rugs:

The **occurrence of staining** is often only identified hours or even days after it occurs, and the **specific type of stain** is not always easily identified, as the perpetrators of the staining incident are usually unavailable for report or comment.

In this situation, complete removal of the stains often requires application of more powerful cleaning agents that are specifically designed for removal of particular types of stains from carpets & rugs. In many instances a number of specialized stain removal spotters must be applied in a particular sequence. In fact, it is not unusual for janitorial staff to have to deal with several different types of stains in the same area, sometimes overlapping! This type of challenge requires the use of carpet & rug stain removal spotter chemicals that must be compatible in sequential use, and frequently demands specialized carpet cleaning equipment such as janitorial spotter machines and extractors.

PROFESSIONAL SPOTTER CHEMICALS FOR REMOVING STAINS FROM CARPETS & RUGS

Following years of experience in our industry, the carpet cleaning experts at **Dobmeier Janitorial Equipment & Supplies Outlet** can highly recommend the professional carpet & rug stain removal spotter systems provided by both **Diversey** (see page 10) and **SSS (Triple S)**, see page 11. We have seen that either of these stain removal systems can be used to obtain excellent and lasting results on many types of carpets if the manufacturer's directions are followed.

- See the [Diversey Professional Carpet & Rug Stain Spotter System](#) (12 Spotters) on page 10
- See the [SSS \(Triple S\) Professional Carpet & Rug Stain Spotter System](#) (7 Spotters) on page 11
- [Professional Stain Removal Equipment](#) for carpets & rugs is referenced on page 12 of this guide

Questions? - Speak With A Dobmeier Stain Removal Expert At 1.800.870. 2006 Or e-mail



Diversey Professional Carpet & Rug Stain Removal Spotter Guide

Percolator and **General Purpose Spotter** are effective on a wide variety of spots and stains. If spots remain after its use, follow the recommendations outlined on the Stain Chart. First, identify the stain/spot on the chart below, then apply spotters in the order shown on the chart: 1 is the first product, followed by product 2 etc. until the spot is gone.

Stain Chart	Percolator	General Purpose Spotter	P.O.G. Spotter	Citrus Express Gel	Tannin Stain Remover	Delible Ink Remover	Red Juice Remover	Gum Remover	Protein Spotter	Min Moisture Method	Stench & Stain Digester	Water Rinse
Adhesive			1	1								2
Asphalt/Tar			1	1								2
Blood*	1	1							2			3
Butter	1	1							2			3
Soot	1	1										2
Catsup/Tomato Sauce	1	1			2		3					4
Chocolate	1	1			2							3
Coffee/Tea	1	1			2							3
Crayon			1	1		2						3
Excrement	2	2							3		1	4
Fruit Juice	1	1			2		3					4
Furniture Polish	1	1	2	2								3
Glue – Solvent			1	1								2
Glue – White	1	1										2
Grease / Oil	1	1	2	2								3
Gum			2	2				1				3
Hand Lotion	1	1	2	2								3
Inks	1	1				2						3
Lipstick	1	1	2	2								3
Liquor	1	1			2		3					4
Marker	1	1				2						3
Mascara	1	1	2	2								3
Milk Products	2	2							3		1	4
Mud	1	1										2
Mustard (if fresh)	1	1			2							3
Nail Polish			1	1								2
Paint – Latex			1	1								2
Paint – Oil Base			1	1								2
Red Juice	1	1					2					3
Rubber Cement			1	1								2
Salad Dressing	2	2							3		1	4
Shoe Polish	1	1	2	2								3
Soft Drinks	1	1			2							3
Tone											1	2
Urine	2	2			3				4		1	5
Vomit	2	2							3		1	4
Water Stain	1	1										2
Wax – Candle			2	2				1				3
Wine – Red & White	1	1			2		3					4
Unknown Stains	1	1	3	3	2							

(see "Carpet Care Tips" to the right for more info)



[BUY Diversey Stain Spotters](#)

CARPET STAIN REMOVAL:

General Stain Removal Rules:
Identify stain and use appropriate spotter(s). If stain cannot be identified, use **General Purpose Spotter** or **Percolator**. If stain remains, use **Paint, Oil & Grease Spotter** or **Citrus Express Gel**. Follow with a thorough rinsing so no cleaner residue is left in carpet. Remove all liquid by blotting or extracting if necessary. Air dry as quickly as possible.

Removing Difficult Stains:
Asphalt Tracking: Vacuum thoroughly before applying diluted **HD Prespray**. Agitate with a carpet rake, extractor or brush and let sit for 10 minutes to loosen soils. Extract according to directions. Dry carpets as quickly as possible.

Reoccurring Stains:
Stains often reoccur when excessive soil or detergent from stain removal spotter remains in the carpet. Remove by re-cleaning with the appropriate spotter, rinse until thoroughly clean and blot dry.

- To Prevent Wicking Of Reoccurring Stains:**
- When spotting, be sure to blot until all of liquid is removed. Extract if necessary.
 - Dry the carpet as quickly as possible using carpet fans or some type of air mover.
 - Use a carpet rake. Depending on the thickness of the pile of the carpet, using a carpet rake can decrease drying time by at least 30%.
 - Do not over-wet the carpet.

Removing Reoccurring Stains:
Apply **Minimum Moisture Method** carpet cleaner and maintainer directly to the spot. Work into carpet area with a soft brush and allow to dwell for 5-10 minutes. Vacuum thoroughly. Repeat the process if necessary.



SSS Triple S Professional Carpet & Rug Stain Removal Spotter Guide

Stain Chart	Enzyme Spotter	Coffee Stain Remover	Red Stain Remover	Rust Remover	Citrus Gel Spotter	Solvent Stain Remover	Gum Remover Aerosol
Adhesives					1	2	
Beer	2	1					
Betadine			1	2			
Blood	1	2					
Browning		1					
Butter	2		1				
Catsup		2	1				
Chocolate		2	1				
Coffee	2	1					
Crayon					1	2	
Cream	1		2				
Dye Stains		2	1				
Egg	1	2					
Feces	1	2					
Fruit Juice		2	1				
Furniture Stains					1	2	
Gravy	3	2	1				
Grease (food)	2	3	1				
Grease (petroleum)					1	2	
Gum							1
Ice Cream	1		2				
Inks					1	2	
Iodine			1	2			
Liquor	2	1					
Lipstick	3				1	2	
Marker					1	2	
Mayonnaise	2		1				
Milk	1		2				
Mustard	3	2	1				
Nail Polish					1	2	
Oil (food)	2	3	1				
Oil (petroleum)					1	2	
Paint					1	2	
Rust				1			
Salad Dressing	2		1				
Shoe Polish					1	2	
Soft Drinks		2	1				
Tar					1	2	
Tea	2	1					
Toner					1	2	
Urine	1	2					
Vomit	1	2	3				
Wine	3	2	1				
Unknown Stains	1	2			3		



[BUY Triple S Stain Spotters](#)

CARPET CARE TIPS:

General Stain Removal Guidelines:

Identify the stain/spot on the stain chart (left), then apply stain removal spotters in the order shown. First apply Spotter 1 from the relevant row in the chart, allow 1-5 minutes dwell time, agitate with a spotting tool or brush, blot with a towel to remove residues. If stain remains, follow with similar treatment using Spotter 2, etc. until the stain is removed. Then rinse with cool water, extract all residues and air dry.

Removing Unknown Stains:

If stain cannot be identified, use **Enzyme Spotter**. If stain remains, use **Coffee Stain Remover** and if stain is still present use **Citrus Gel Spotter**. Follow with a thorough rinsing and extraction so that no cleaner residue is left in your carpet or rug. Then air dry.

Difficult Spots and Stains:

Asphalt Tracking: Vacuum thoroughly before applying diluted **Solvent Stain Remover**. Agitate with a carpet rake, extractor or brush and let sit for 10 minutes to loosen soils. Extract according to directions. Dry carpets as quickly as possible.

Reoccurring Spots:

This occurs because excessive soil or detergent from spotter remains in carpet. Remove by re-cleaning with appropriate spotter, rinse until thoroughly clean and blot dry.

Preventing Reoccurring Spots From Wicking:

- When spotting, be sure to blot until all of liquid is removed, extract if necessary.
- Dry the carpet as quickly as possible using carpet fans or some type of air mover.
- Use a carpet rake. Depending on the thickness of the pile of the carpet, using a carpet rake can decrease drying time by at least 30%.
- Do not over-wet the carpet.



PROFESSIONAL CLEANING EQUIPMENT FOR REMOVING STAINS FROM CARPETS & RUGS



Clarke is a division of Nilfisk-Advance Group, renowned for its' range of high quality heavy-duty commercial cleaning equipment. Clark commercial vacuum cleaners, carpet cleaners, floor machines... are built to perform and last in the toughest commercial, institutional, & industrial cleaning applications.



Clarke BextSpot Std & Deluxe Carpet Spotters



Clarke BEXT 150H & 300HV Carpet Water Extractors



Clarke DirectAir Carpet Dryer / Air Mover

\$\$\$SAVE\$\$ - DOBMEIER DISCOUNT ONLINE JANITORIAL CARPET CLEANING EQUIPMENT CATALOGS

Carpet Spotter Machines are used to efficiently clean isolated areas of carpet that may be deeply soiled or stained
[Janitorial Carpet Spotter Equipment Catalog](#) - [Carpet Spotter Supplies Catalog](#)

Carpet Cleaning Shampoo can be used with **Rotary Brush Machines** or **Dry Foam Carpet Machines** to clean deep into your carpet pile. When applying the shampoo with a brush and a standard speed rotary floor buffer machine the brushing action foams the shampoo into the carpet pile. Dry foam machines generate the foam internally.
[Janitorial Carpet Cleaning Machines Catalog](#) - [Carpet Cleaning Supplies Catalog](#)

A **Carpet Extractor** uses a pump to force carpet cleaning detergent deep into the carpet pile and then pulls it back out, with entrained dirt and soil, by using powerful vacuum extraction motors.
[Janitorial Carpet Extractor Equipment Catalog](#) - [Carpet Extractor Supplies Catalog](#)

Air Movers are used to circulate air over damp carpets in order to dry them more quickly. It has also been shown that raking the carpet or rug can significantly decrease drying times.
[Janitorial Air Movers Catalog](#)



SSS (Triple S) produces an excellent range of heavy-duty janitorial cleaning equipment including commercial vacuum cleaners, carpet cleaners, floor machines... and is renowned for providing excellent value.



SSS (Triple S) Achiever 110 Carpet Stain & Soil Extractor



SSS (Triple S) Puma Air Mover
Optional Transport Kit Available



Dobmeier Janitorial Equipment & Supplies Outlet Is An Approved AbilityOne Service Center.

We provide OEM supplies and repair parts for everything that we sell.

Need Help? – Call A Dobmeier Cleaning Equipment & Supplies Expert At 1.800.870. 2006 Or e-mail